



DEFINING BATCH PLANT EXCELLENCE.

HT-series haganator travel-all

The National Ready Mixed Concrete Association endorses CPMB and PMMD member companies as preferred providers of concrete batching equipment.

Serving the U.S. and international customers.

Sales Offices Located in Dallas, Chicago and Atlanta



DEFINING BATCH PLANT EXCELLENCE.

www.vincehagan.com
sales@vincehagan.com

800.354.3238
214.330.4601
FAX 214.331.9177



PO Box 655141 Dallas, TX 75265-5141
1601 North Walton Walker Dallas, TX 75211





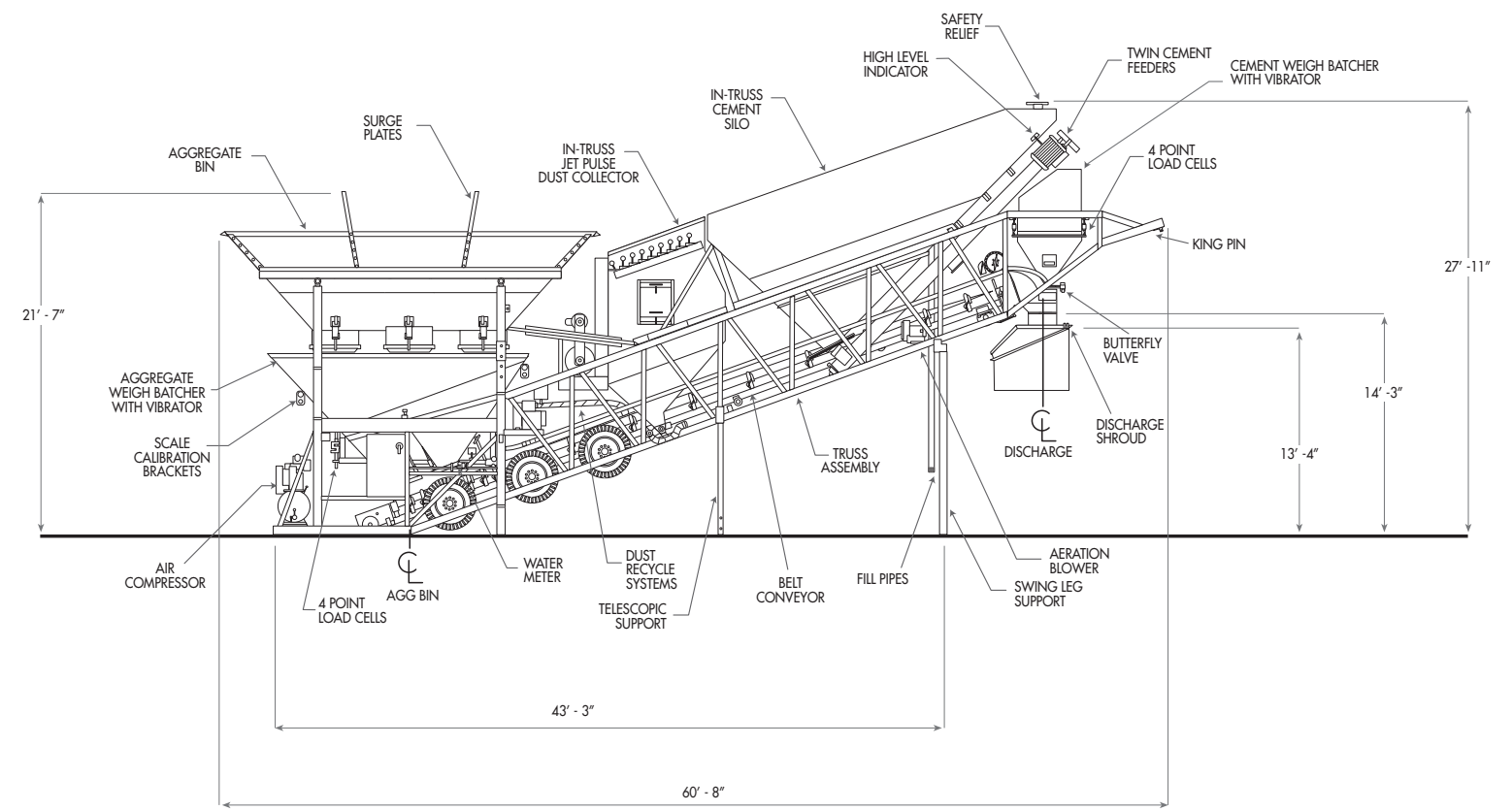
HT-SERIES BATCH PLANT AT THE VINCE HAGAN FACTORY IN SUNNYVALE, TEXAS

In 1956, Vince Hagan, founder of The Vince Hagan Company, began with an original idea. He designed and built the first truly mobile concrete batch plant. Over the years, this patented “Haganator” design has become an international icon for the mobile concrete industry. Today, The Vince Hagan Company is continuing to improve this original idea. By bringing together proven experience and the most current technology, we offer our customers the highest quality products and services available in the industry.

The HT-Series Haganator Travel-All is the most time-efficient and cost-effective fully mobile concrete batch plant available today. The HT is completely mobile and travels as a single load of freight including dust collection, saving you transportation cost. At your job site, the plant can be fully erected and operational in less than four hours. All components are on board and the entire plant is pre-wired to NEC, plumbed for air and water, and tested at our factory to ensure trouble free start-up and operation.

The Vince Hagan Company offers the highest quality products and services available. Our sales and engineering staff will guide you through the planning stages to ensure your company is purchasing the right equipment for the job. Sales offices are located in Dallas, Chicago, and Atlanta. We have company service personnel who travel directly to your job site and our replacement parts are available on a 24 hour basis. Our goal is to provide the best service before and after the sale. A successful project begins with The Vince Hagan Company.

haganator fully mobile concrete batching plant



All information contained herein is general in nature and is not intended for specific application purposes. The Vince Hagan Company reserves the right to make changes in specifications shown herein or add improvements at any time without notice or obligation, illustrations show standard and optional items.



HT-SERIES BATCH PLANT AND HCA AUXILIARY SILO

STANDARD HAGANATOR MODELS

CAPACITY
 AXLES (dual tires, 10-hole wheels & air brakes)
 TRUSS WIDTH
 DISCHARGE HEIGHT (steel clearance)
 OVERHEAD BIN, 3 COMPARTMENTS
 (both sides fold down for travel)
 AGGREGATE BATCHER SIZE
 4 POINT LOAD CELL 20K EACH
 AGGREGATE BATCHER GATES
 TRANSFER BELT CONVEYOR

DEEP TROUGHING IDLERS
 CEMENT SILO (in-truss design)
 CEMENT FEEDERS, MULTI-FLIGHT
 (reversible and independently controlled)
 CEMENT BATCHER SIZE
 4 POINT LOAD CELL 2.5K EACH
 CEMENT BATCHER DISCHARGE
 WATER METER (piping to discharge)
 AIR COMPRESSOR
 BATCHING CONTROLS (automation available)
 ELECTRICAL SERVICE (pre-wired in conduit)
 MOTORS ENCLOSURE RATING
 OPERATING POSITION LENGTH
 (centerline discharge to centerline agg bin)
 TRAVEL DIMENSIONS: LENGTH (king pin to rear)
 WIDTH
 HEIGHT
 WEIGHT

HT-10250A-45

140 YPH (transit mix)
 Tandem
 10'-0" WIDE TRUSS
 14'-6"
 45 TON/33.3 CY
 YES
 10 YARDS - 36,000#
 YES
 2 DOUBLE CLAM
 24"/15 HP
 380 TPH/380FPM
 35 DEGREES
 250 BBL/1000 CU FT
 TWIN 7"/10HP/42 CFM
 YES
 10 YARDS - 7,200#
 YES
 10" BUTTERFLY
 2" TURBO
 10 HP/35 CFM
 ELECTRIC SOLENOID
 230/460V/3PH/60HZ
 TEFC
 40'-8"
 61' - 0"
 12' - 0"
 14' - 6"
 52,000#

HT-10300B-65

200 YPH (transit mix)
 Tandem
 10'-0" WIDE TRUSS
 14'-4"
 65 TON/48.1 CY
 YES
 10 YARDS - 36,000#
 YES
 2 DOUBLE CLAM
 30"/20 HP
 600 TPH/380FPM
 35 DEGREES
 300 BBL/1200 CU FT
 TWIN 10"/15HP/100 CFM
 YES
 10 YARDS - 7,200#
 YES
 10" BUTTERFLY
 3" TURBO
 10 HP/35 CFM
 ELECTRIC SOLENOID
 230/460V/3PH/60HZ
 TEFC
 40'-8"
 61' - 0"
 12' - 0"
 14' - 6"
 56,000#

HT-12400C-65

220 YPH (transit mix)
 Tandem
 10'-0" WIDE TRUSS
 14'-2"
 65 TON/48.1 CY
 YES
 12 YARDS - 40,000#
 YES
 2 DOUBLE CLAM
 36"/30 HP
 806 TPH/380FPM
 35 DEGREES
 400 BBL/1600 CU FT
 TWIN 12"/25HP/240 CFM
 YES
 12 YARDS - 10,000#
 YES
 10" BUTTERFLY
 3" TURBO
 15 HP/50 CFM
 ELECTRIC SOLENOID
 230/460V/3PH/60HZ
 TEFC
 40'-8"
 61' - 0"
 12' - 0"
 14' - 9"
 64,000#

SUPER HT-12500D-80

Up to 400 YPH (central mix)
 Triple
 12'-0" WIDE TRUSS
 14'-10"
 80 TON/59.2 CY
 YES
 12 YARDS - 40,000#
 YES
 2 DOUBLE CLAM
 48"/60 HP
 2164 TPH/650FPM
 35 DEGREES
 500 BBL/2000 CU FT
 TWIN 12"/25HP/240 CFM
 YES
 12 YARDS - 10,000#
 YES
 10" BUTTERFLY
 3" TURBO
 15 HP/50 CFM
 ELECTRIC SOLENOID
 230/460V/3PH/60HZ
 TEFC
 46'-8"
 65' - 6"
 12' - 0"
 14' - 3"
 87,000#

Depending on your needs, the HT-Series mobile batch plant has many options available to meet your production requirements:

- Exclusive plant mounted jet-pulse dust collection system.
- Auto dust recycle system.
- Up to 500 BBL of additional cement/fly ash storage.
- Up to 100 Tons of aggregate storage.
- Complete hydraulic self-erect system. No cranes required.
- Multi-flight cement screw feeders up to 12".
- Deep trough transfer belt 24" to 48" wide. (Belt speed 380 ft. /min. up to 650 ft. /min.)
- 12 yard aggregate batcher.
- 12 yard cement batcher.

Need additional storage? The Vince Hagan HCA completely mobile auxiliary cement or fly ash storage silo is also available. Featuring an in-truss frame design for easy travel and set up. This low profile silo is the largest in the industry with up to 500 BBL of storage capacity.



HCA MOBILE AUXILIARY SILO IN TRAVEL POSITION

What is so unique about the HT-Series Haganator Travel-All?

- Fewest loads of freight in the industry (Due to plant mounted dust system)
- Largest cement storage in the industry
- Largest aggregate storage in the industry
- Quick and easy set-up-under 4 hours
- No concrete foundations required (depending on soil conditions)
 Sets up on steel plates or timber mats.
- Completely erected and tested at our factory
- Easily adapted to a central mix operation



HT-SERIES BATCH PLANT WITH HCA IN DOWNTOWN DALLAS



EXCLUSIVE IN-TRUSS JET PULSE DUST COLLECTOR

The high efficiency system travels with the plant. Eliminates one load of freight. No silo top dust collector required. No additional ducting. Just clean air.



OVERHEAD AGGREGATE STORAGE SECTION — 45 ton - 100 ton capacity. Sides fold down for easy travel. Two heavy-duty discharge gates per compartment. Largest aggregate bin available that travels with the plant.

45 ton - 100 ton capacity. Sides fold down for easy travel. Two heavy-duty discharge gates per compartment. Largest aggregate bin available that travels with the plant.



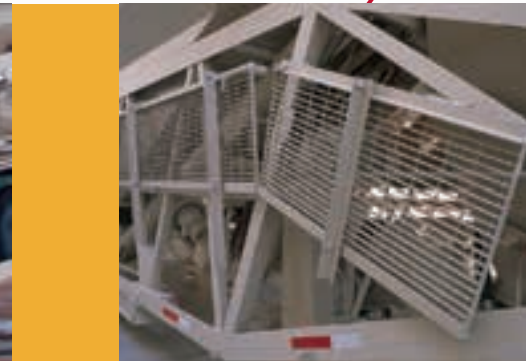
AIR SUPPLY

Mounted air compressor with tank. Sized to meet plant requirements. Complete air piping mounted on the plant.



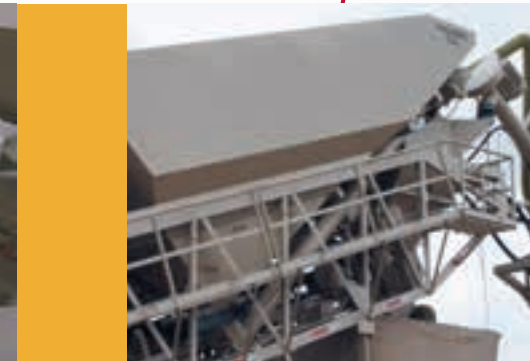
ELECTRICAL CONTROLS

Manual electric push-button control panel or automation ready NEMA enclosure. Electric air control valves with emergency manual override. Complete wiring in EMT conduit to NEC Standards. Main disconnect with motor starters mounted in NEMA panel. Special electrical requirements also available.



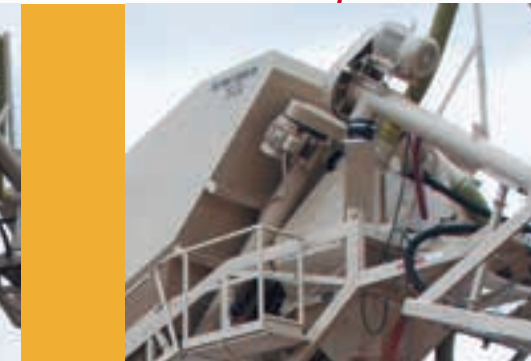
WORK PLATFORMS & WALKWAYS

Safety without compromising portability. Include this option for easy accessibility and maintenance. Folds up and travels with the plant.



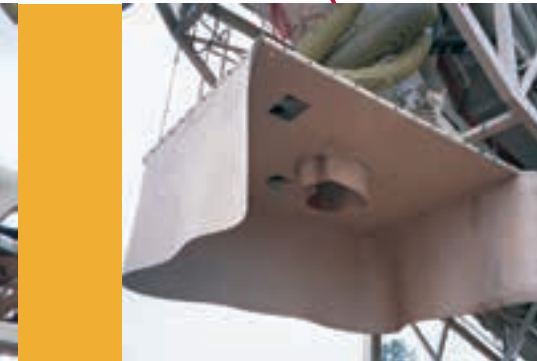
IN-TRUSS CEMENT SILO

250 to 500 BBL cement storage, largest in the industry (4 cu. ft. per BBL). In-truss frame design includes fill pipe, manual pressure relief valve, piped aeration system, manhole, and dual discharge with emergency slide gates. Optional split silo available.



SCREW FEEDERS

Twin 7", 10" or 12" screw feeders. Fastest available with 1/2 pitch initial flight to prevent packing, TEFC electric motor, inspection plates, clean out doors, and emergency reversing starters.



DUST SHROUD

Various shroud options available to match transit mixer, (three sided fixed, "baby buggy", or telescopic). All designed for high efficiency dust collection.